

BUDHA DAL PUBLIC SCHOOL PATIALA

Final Examination (5 March 2024)

CLASS - VIII

PAPER- SCIENCE (SET-B)

Time:3 hr.

M.M. 80

General Instructions:

1. All questions are compulsory.
2. Attempt all questions section wise in the serial order neatly and leave one line after every answer.
3. Draw neat and labelled diagrams wherever required.

SECTION-I

I) Answer in one word:

(1×10=10)

- Q1. Name a non-metal which is a good conductor of electricity.
- Q2. Give two examples of liquid fuels.
- Q3. Which cell organelle is known as the power house of the cell?
- Q4. Name the male sex hormone.
- Q5. What is the other name for ductless glands?
- Q6. Which scale is used to measure the intensity of an Earthquake?
- Q7. What is the unit of frequency?
- Q8. What is the number of images formed if the angle between the two plane mirrors is 90° ?
- Q9. Name any two diseases caused by polluted water.
- Q10. Name the hormone secreted by pituitary gland.

SECTION-II

II) Give short answers:

(2×10=20)

- Q11. Which oxide is formed when non metals react with oxygen? Give one example.
- Q12. Write two principles on which firefighting operations work.
- Q13. Define Multicellular organisms. Give two examples.
- Q14. Give reason: In males, testes lie in the scrotum outside the abdominal cavity.
- Q15. Why are adolescents advised to take more proteins in their diet than adults?
- Q16. Why is car with closed windows a safe place during lightning?
- Q17. Write any two measures to reduce noise pollution.
- Q18. What is hypermetropia and how can it be cured?
- Q19. Write any two harmful effects of water pollution.
- Q20. Why are chromosomes called hereditary vehicles?

B-1



SECTION-III

III) Give answers:

(3×10=30)

Q21 Write differences between metals and non-metals on the basis of

- (a) ductility (b) conductivity of heat (c) lustre

Q22. With the help of well labelled diagram write any two characteristic features of human cheek Cell.

Q23. (a) Name two animals that undergo internal fertilization.

(b) In which organ fertilization take place in females?

(c) Which type of fertilization takes place in frogs?

Q24. (a) What is menopause?

(b) How are sex chromosomes represented in females?

(c) Which gland secretes thyroxine?

Q25. Write any three harmful effects of lightning.

Q26. (a) In which medium, sound travels slowest.

(b) What is frequency?

(c) What are inaudible sounds?

Q27. (a) What do you mean by reflected ray?

(b) Write any two examples of non-luminous objects.

(c) Rods are sensitive to_ Light.

Q28. Draw a well labelled diagram of a foam type fire extinguisher.

Q29. Write any three causes of air pollution.

Q30. (a) What do you mean by dispersion of light?

(b) Name the innermost layer of the earth.

SECTION-IV

(5×3=15)

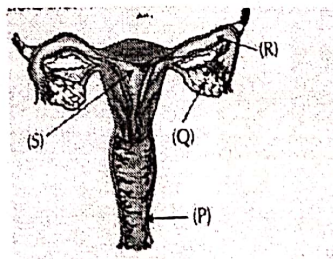
Q31. (I) Rahul takes out a piece of sodium from liquid X. He dried it on a filter paper and uses a small part of it for his experiment. By mistake he leaves the left-over piece uncovered on the table.

a) Identify liquid X. (1)

b) What happens to the piece of sodium left on the table? Write chemical equation too justify your answer. (2)

(II) Why water cannot be used to put off fires caused burning of oil or petrol? (2)

Q32. The following figure shows the female reproductive system. Answer the questions that follow.



(2)

B-2

- a) Label P, Q, R, S (2)
- b) Name the hormones released by Q. (1)
- c) What is the function of P and S? (2)

Q33. In the following question, two statements are given-one labelled Assertion (A) and the other labelled Reason (R). Write the correct answer to this question from the codes (a), (b), (c) and (d) as given below. (1)

Assertion: The secretion of thyroxine hormone depends upon the level of the iodine present in the body.

Reason: Iodine is essential for the formation of thyroxine hormone.

- a) Both A and R are true and R is the correct explanation of the assertion.
- b) Both A and R are true and R is not the correct explanation of the assertion.
- c) A is true but R is False.
- d) A is false but R is true.

II) Write T for True statement and F for false statement (1 x 2 = 2)

- a) Chlorine is not used for disinfecting water and to manufacture bleaching powder.
- b) Richter scale is used to describe the magnitude of earthquake.

III) Match the following: (0.5 x 4 = 2)

Chromosomes	Green plastids
Chloroplasts	Binary fission
Amoeba	budding
Hydra	carry genes

Case Study: (1 x 5 = 5)

When an object vibrates, it sets the particles of the medium around the object into vibrations. These vibrating particles exert a force on the adjacent particles of the medium. This makes the adjacent particle displace from their mean position.

Pitch is the fundamental characteristic of sound by which we can observe the difference between a shrill sound and a flat sound whereas Loudness is the fundamental characteristic of sound by which a loud sound can be differentiated from a faint sound even though both may have the same pitch.

- 1) Sound is produced by
 - a) any object b) all objects c) vibrating objects d) none of these
- 2) The healthy human ear can hear sounds of frequency in the range
 - a) 20hz to 20,000hz b) 20hz to 20,0000hz
 - c) 2hz to 20,000 hz d) 20,000hz to 20,0000hz
- 3) Which physical quantity decides the loudness of sound?
 - a) quality b) amplitude c) pitch d) frequency
- 4) Which physical quantity decides the pitch of sound?
 - a) loudness b) quality c) intensity d) frequency
- 5) What is the minimum distance between the observer and the reflector for echo to be heard?
 - a) 17cm b) 15cm c) 17m d) 15m